

Injection Date : Thu, 2. Nov. 2023

Seq Line : 11

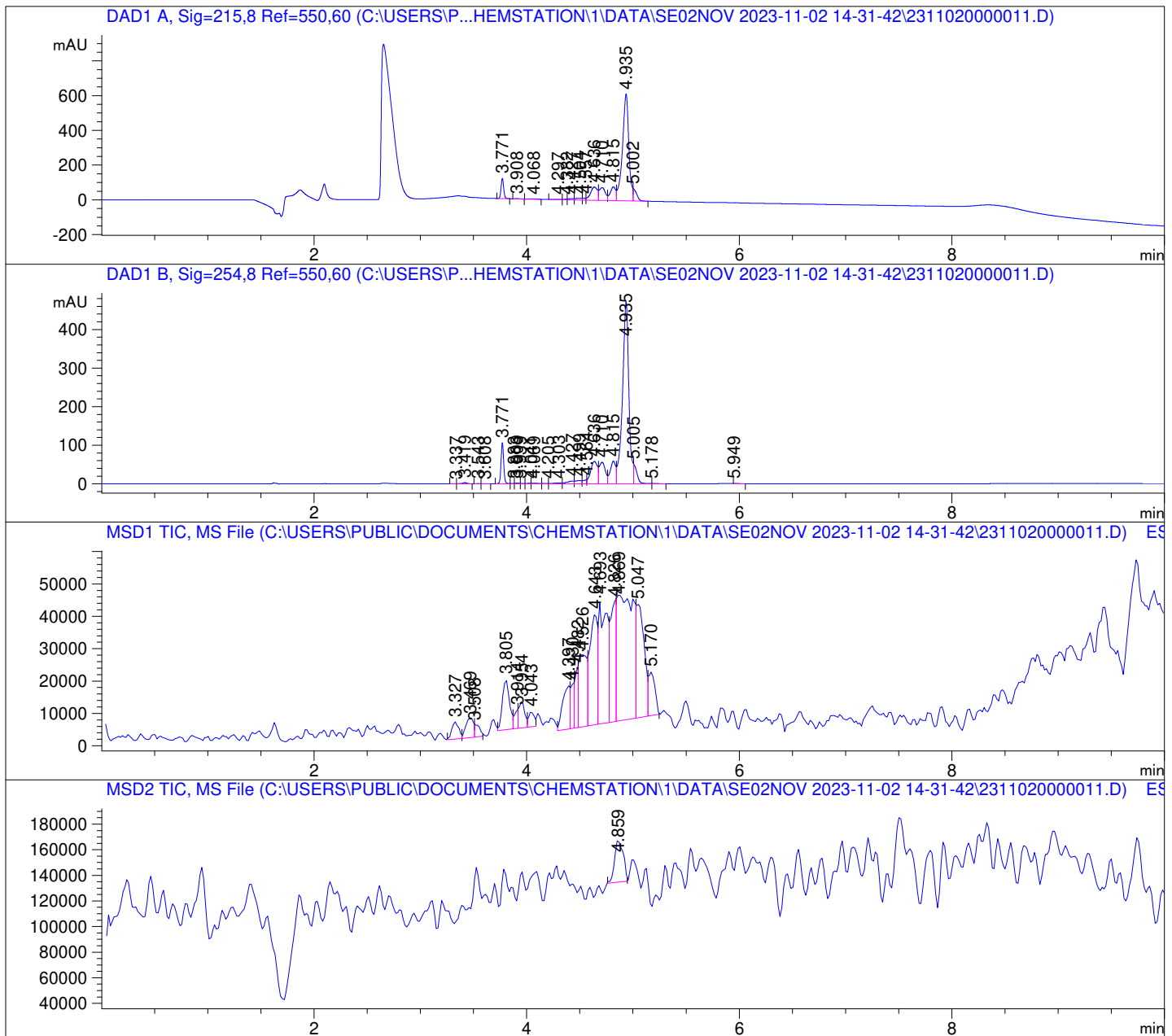
Location : 12

Inj. Vol. : 2 µl

Acq. Method : C:\Users\Public\Documents\ChemStation\1\Data\SE02NOV 2023-11-02
14-31-42\22010446 LCMS-6.M

Analysis Method : C:\Users\Public\Documents\ChemStation\1\Data\SE02NOV 2023-11-02
14-31-42\22010446 LCMS-6.M (Sequence Method)

Waters XBridge Phenyl (4.6 * 150 mm; 3.5 µm); 0.05% TFA (aq) / AcN: 100/0 (0.0 min) -
-> (6.0 min) --> 70/30 (0.0 min) --> (2.0 min) --> 10/90 (2.0 min); Flow: 1.0 ml/min;
MSD1 = positive; MSD2 = negative

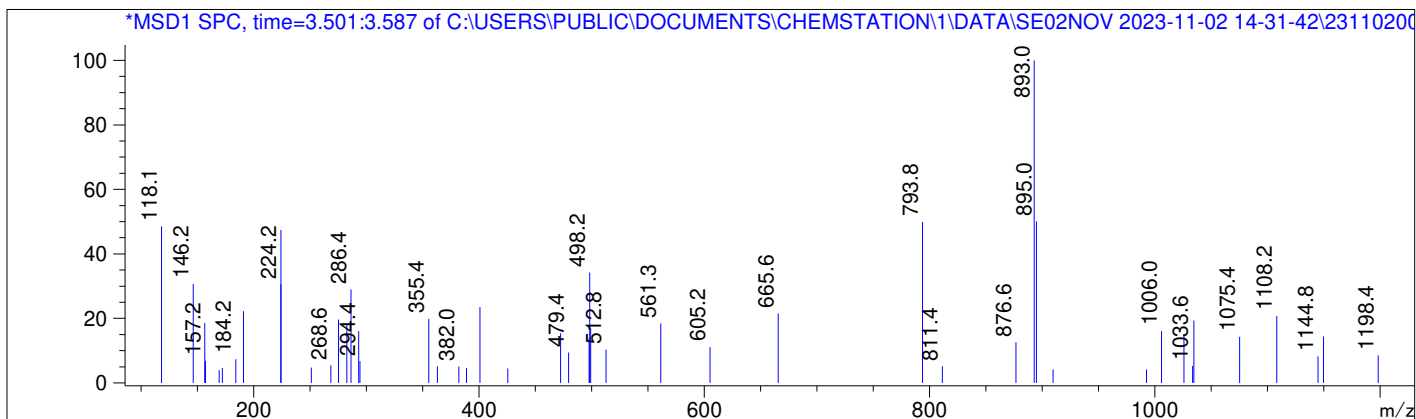
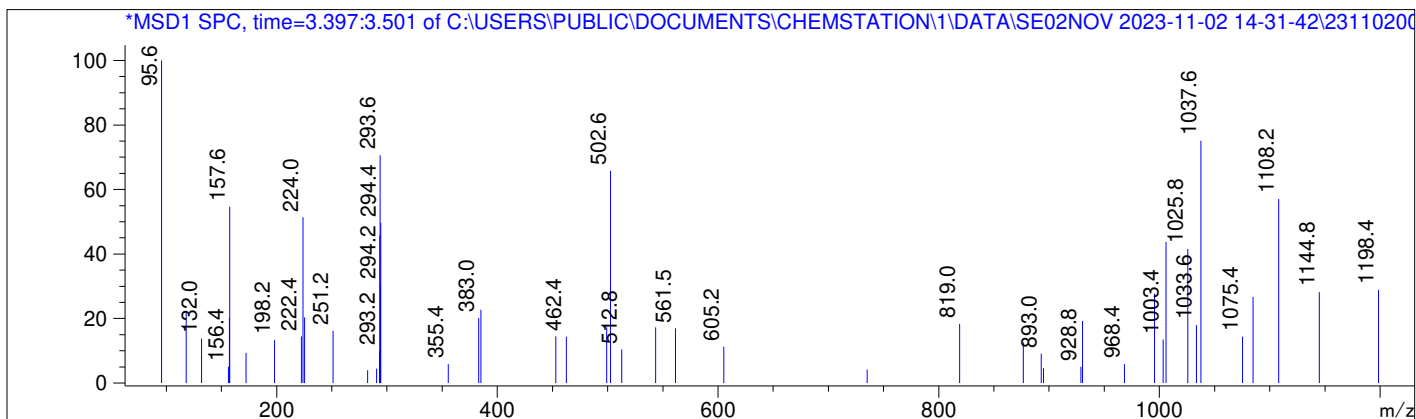
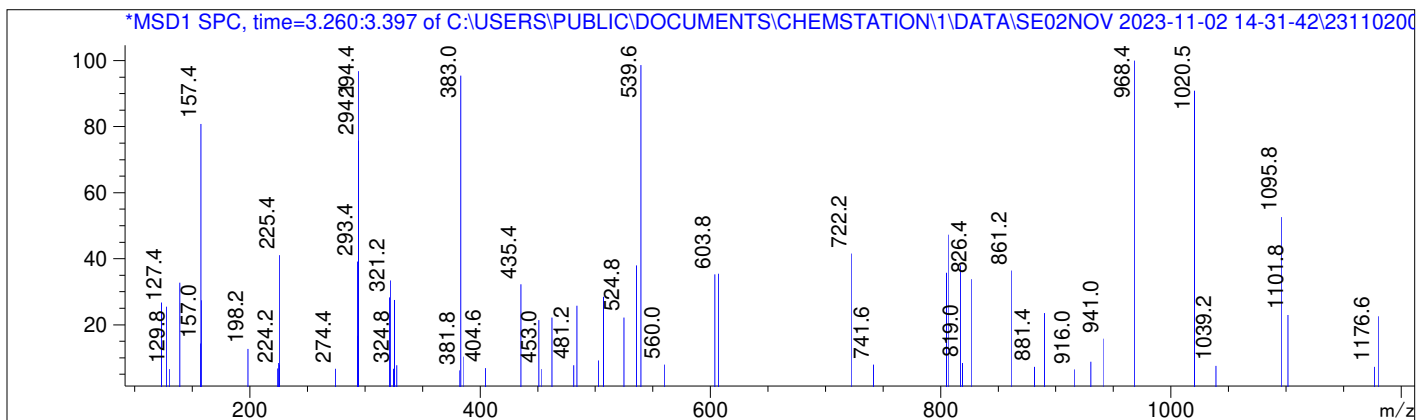


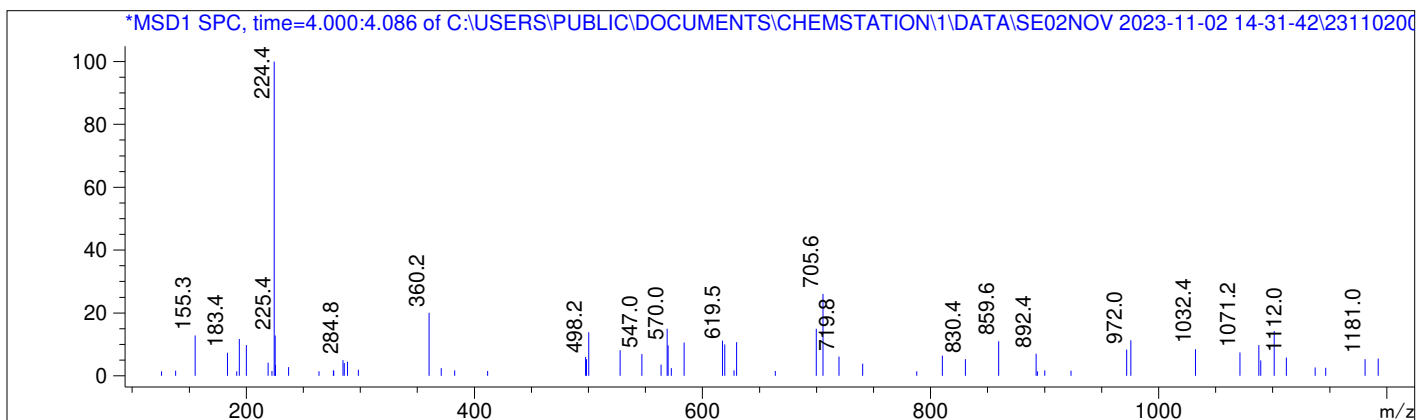
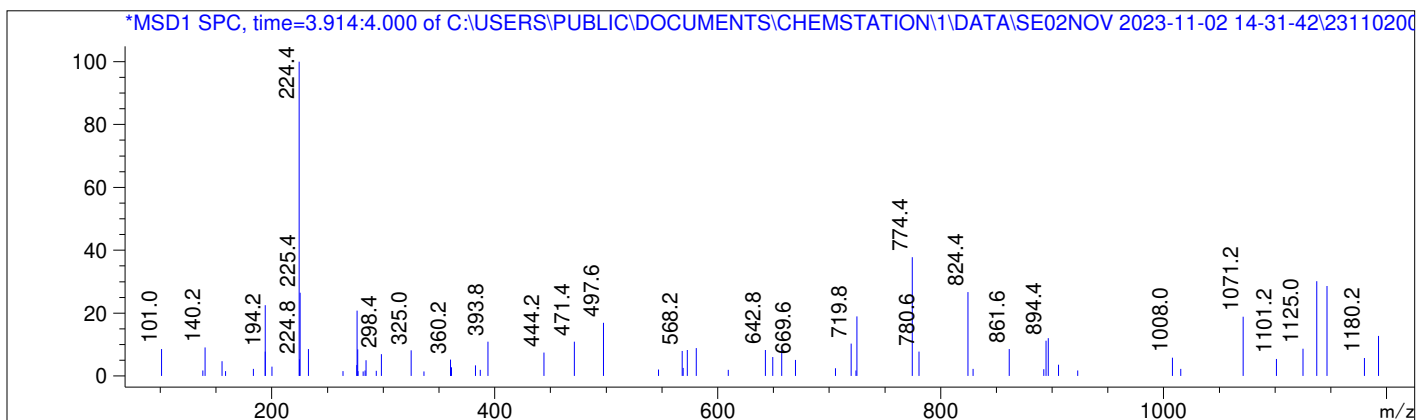
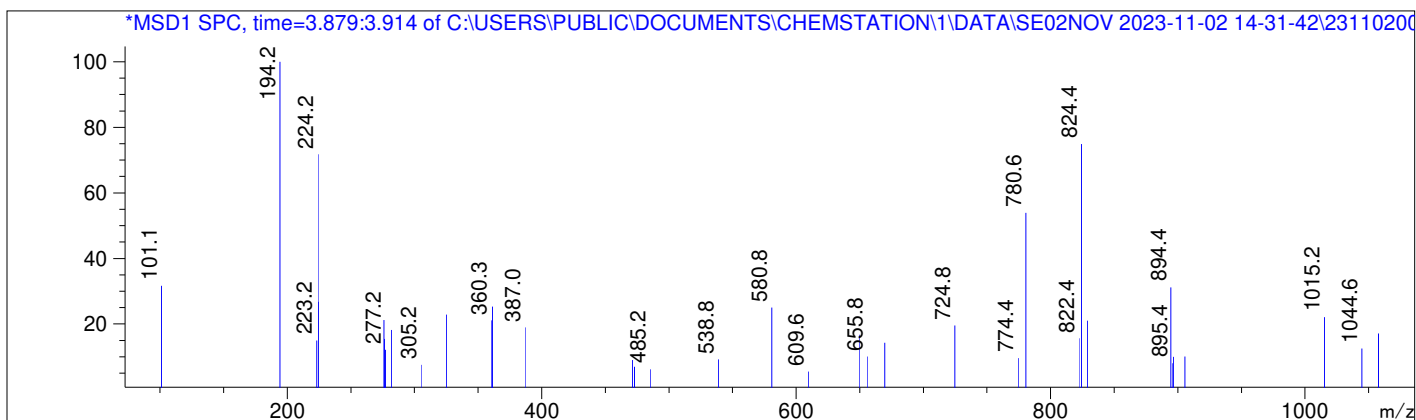
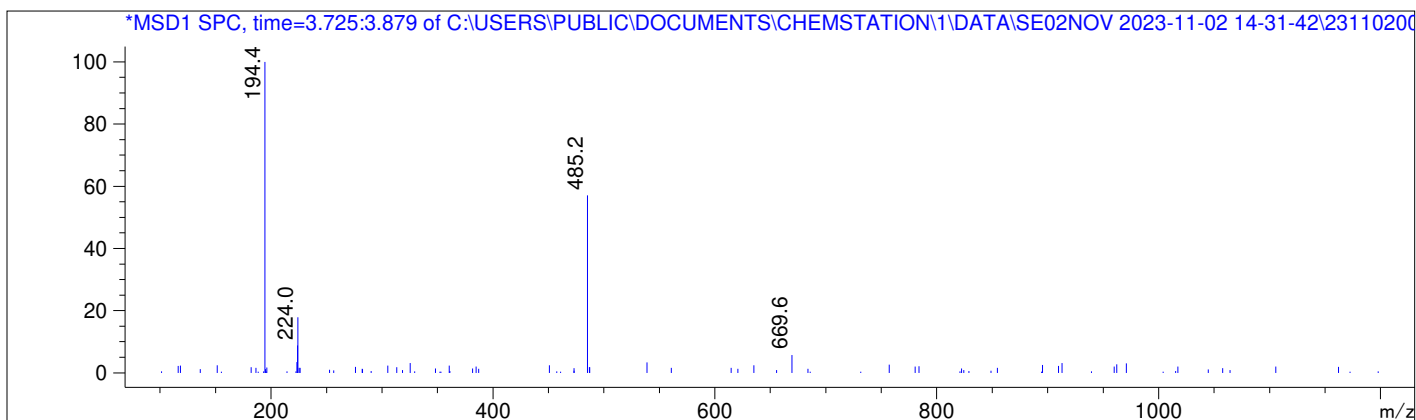
DAD1 A, Sig=215,8 Ref=550,60

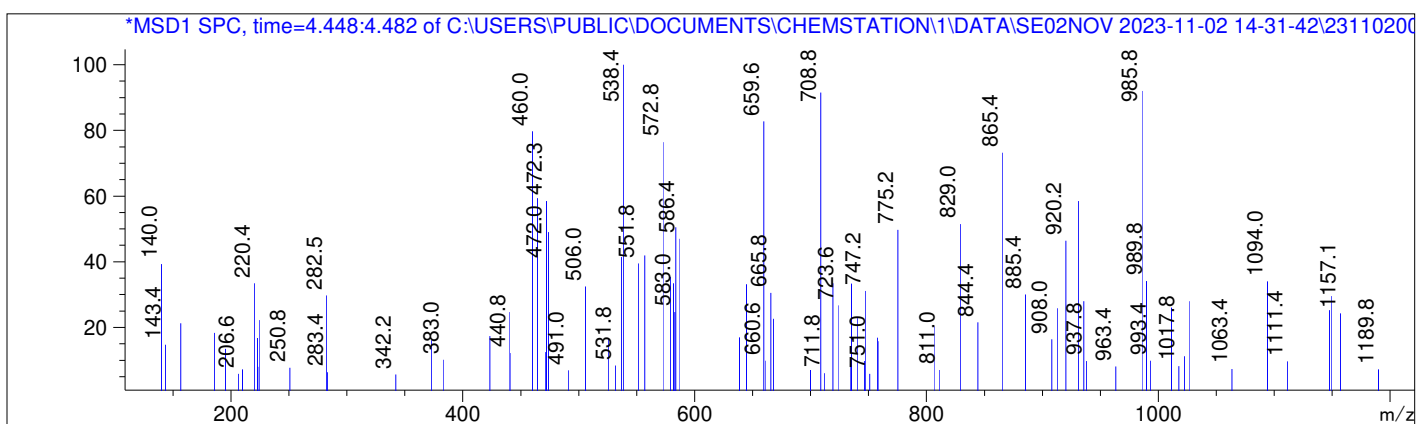
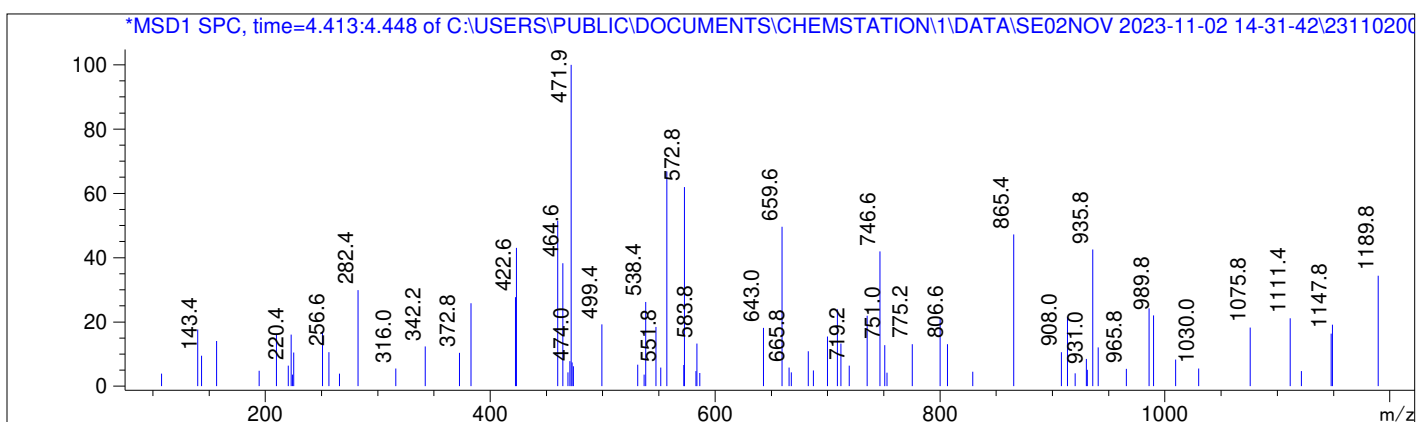
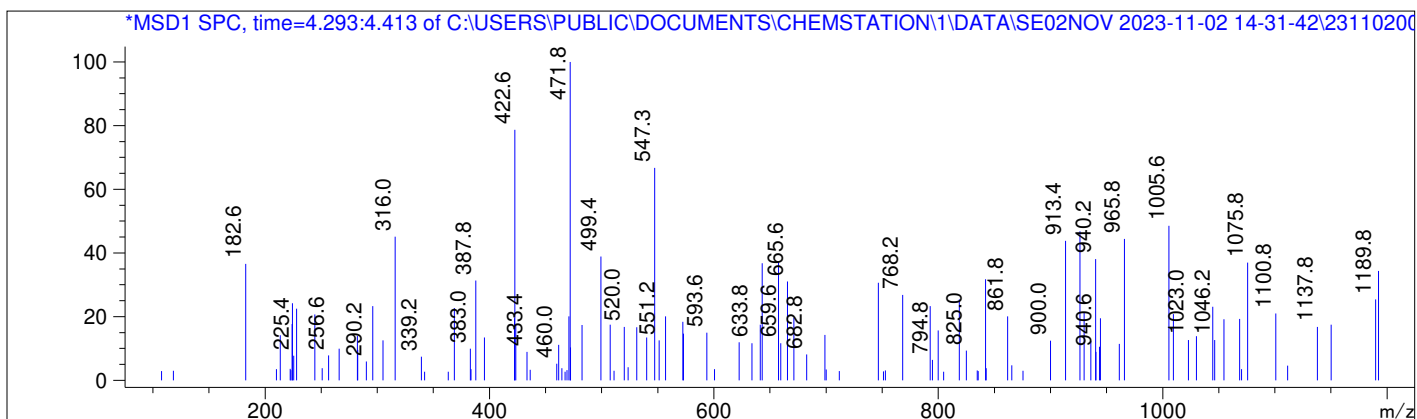
Peak #	Ret. Time [min]	Area [mV *s]	Area %
1	3.771	197.992	4.974
2	3.908	3.896	0.098
3	4.068	8.249	0.207
4	4.297	7.341	0.184
5	4.382	7.580	0.190
6	4.427	27.707	0.696
7	4.504	41.417	1.041
8	4.557	21.469	0.539
9	4.636	348.794	8.763
10	4.710	293.710	7.379
11	4.815	284.868	7.157
12	4.935	2578.843	64.789
13	5.002	158.496	3.982

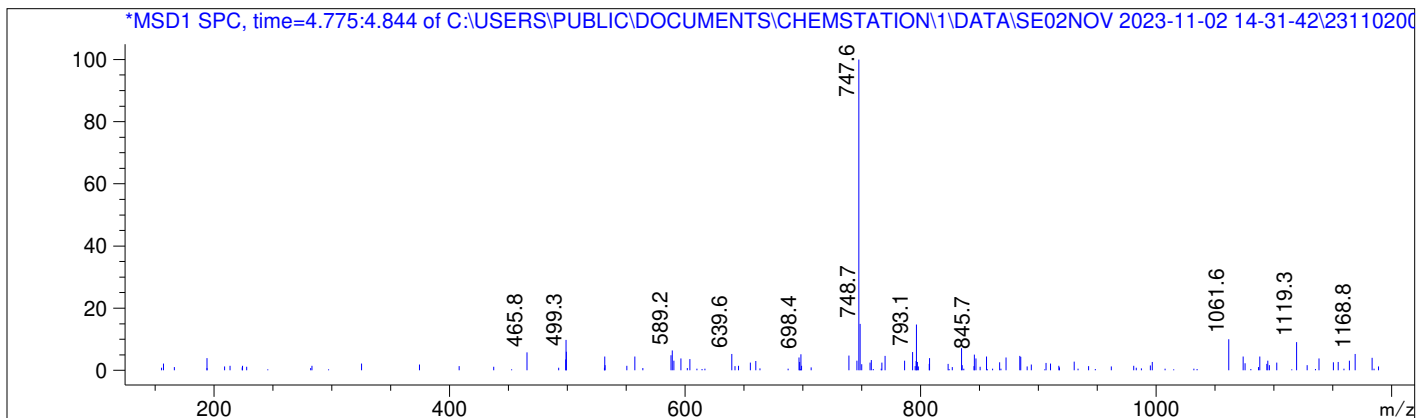
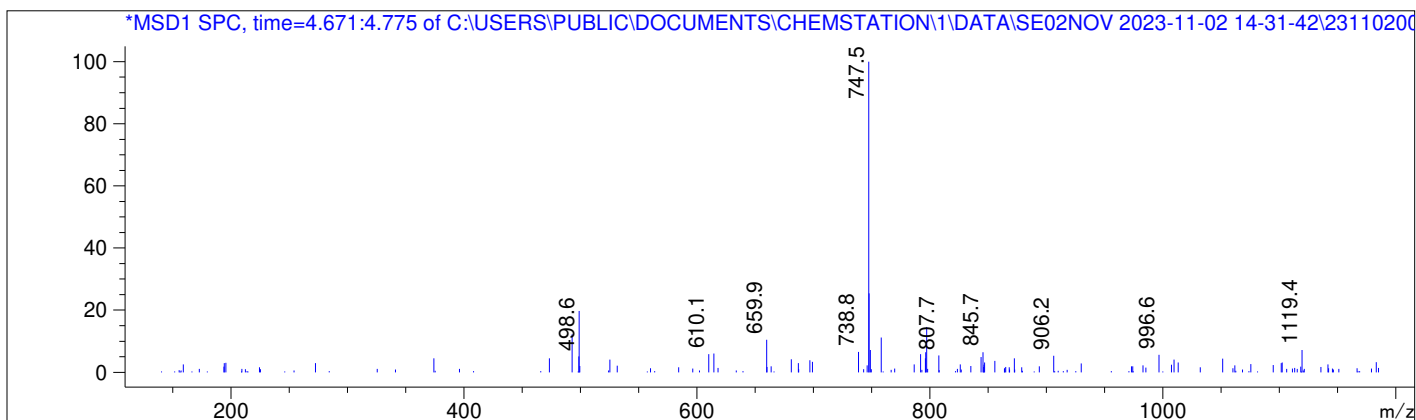
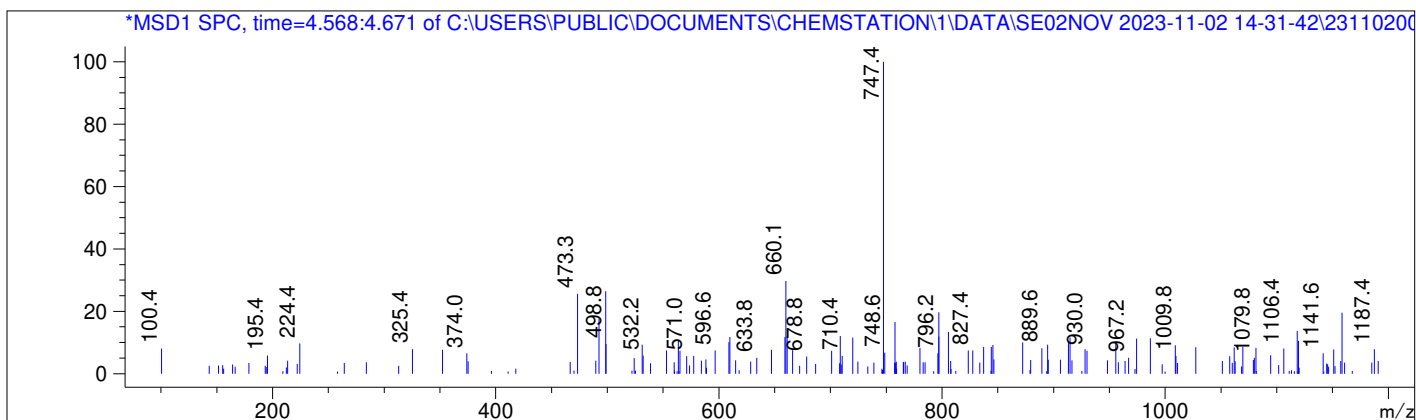
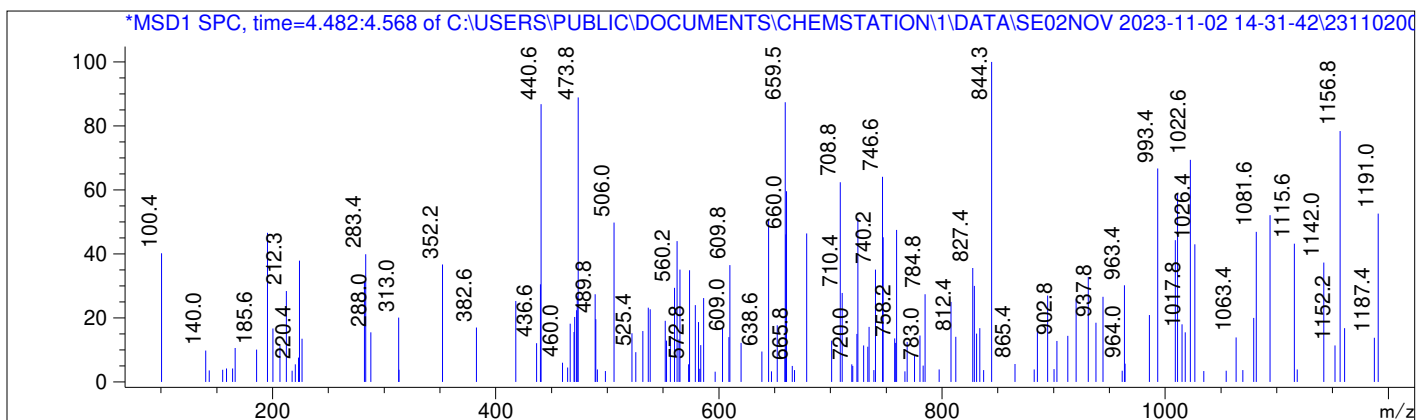
DAD1 B, Sig=254,8 Ref=550,60

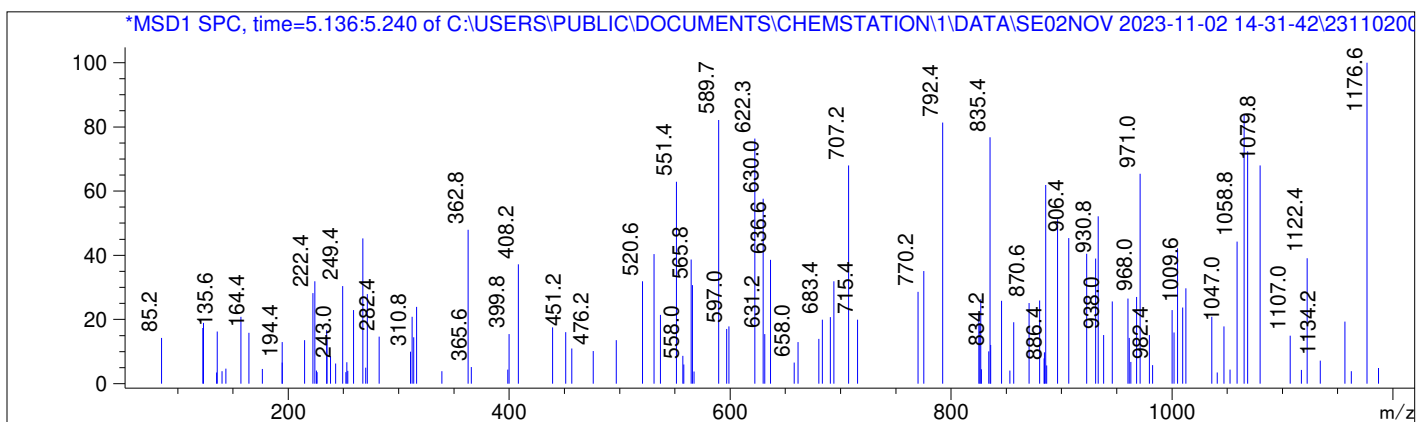
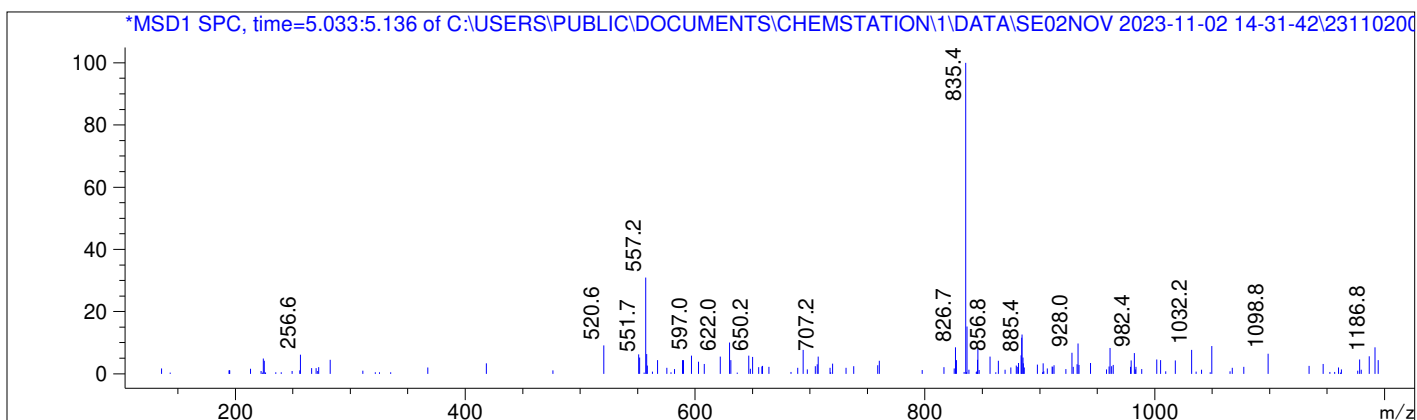
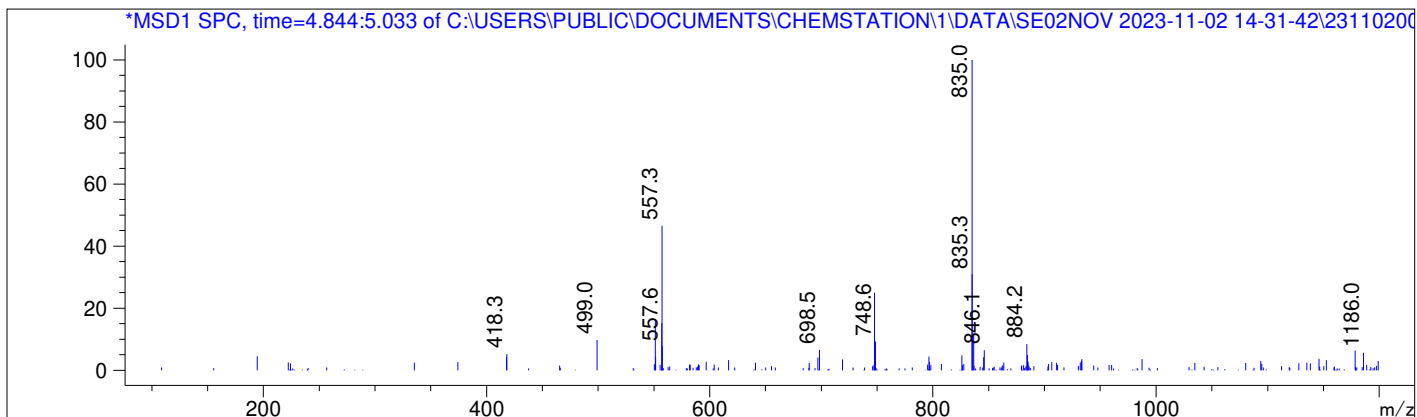
Peak #	Ret. Time [min]	Area [mV *s]	Area %
1	3.337	0.441	0.014
2	3.419	8.390	0.273
3	3.543	0.580	0.019
4	3.608	0.494	0.016
5	3.771	182.761	5.939
6	3.883	1.349	0.044
7	3.909	4.202	0.137
8	3.939	1.770	0.058
9	4.041	3.228	0.105
10	4.069	6.612	0.215
11	4.205	1.499	0.049
12	4.303	10.461	0.340
13	4.427	31.016	1.008
14	4.499	33.050	1.074
15	4.564	22.987	0.747
16	4.636	260.418	8.462
17	4.710	222.027	7.215
18	4.815	210.512	6.841
19	4.935	1962.768	63.780
20	5.005	110.659	3.596
21	5.178	1.030	0.033
22	5.949	1.134	0.037











Data -> C:\USERS\PUBLIC\DOCUMENTS\CHEMSTATION\1\DATA\SE02NOV 2023-11-02 14-31-42\ ->
Sample-> CPT22010446-13-A2-50deg-24h
=====

